

Stepping Motors

M35SP-8

OUTLINE

"M35SP-8" has been endowed with the highest output torque among the 35mm outer diameter model series holding torque : 38.2mN·m, pull-out torque : 23.0mN·m/200pps, and pull-in torque : 22.5mN·m/200pps (12V DC).

Outstanding running noiseless-ness acquired. This model that is the most adequate to future compact electronic apparatuses.



FEATURES

1. Compact size and high output torque.
2. Superior running quietness and stability.
3. Step angle : 7.5°.
4. Excellent responsiveness acquired.

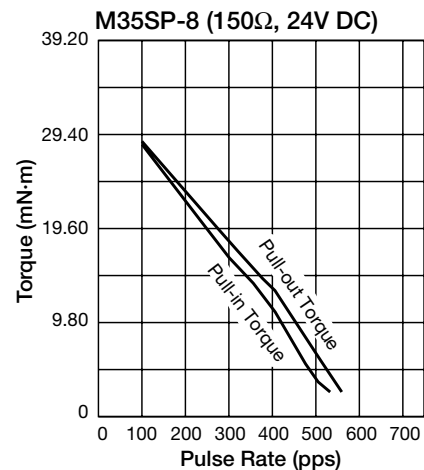
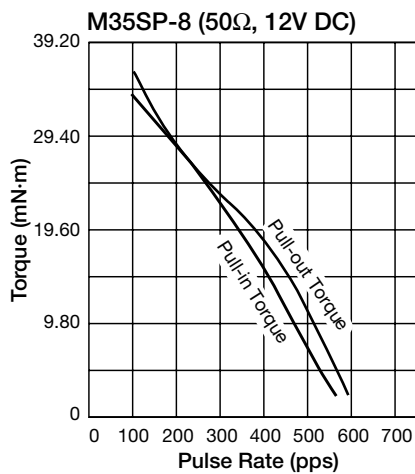
USES

Printers, typewriters, word processors, facsimiles, and such.

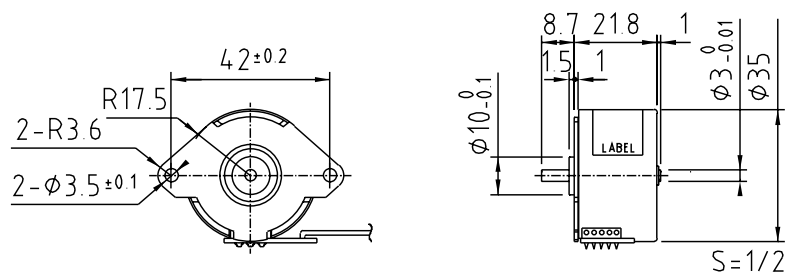
SPECIFICATIONS

Items	M35SP-8	
Rated Voltage	DC 12V	DC 24V
Working Voltage	DC 10.8-13.2V	DC 21.6-26.4V
Rated Current/Phase	259mA	173mA
No. of Phase	4 Phase	4 Phase
Coil DC Resistance	50Ω/phase±7%	150Ω/phase±7%
Step Angle	7.5°/step	7.5°/step
Excitation Method	2-2 Phase excitation (Unipolar driving)	
Insulation Class	Class E insulation	Class E insulation
Holding Torque	38.2mN·m	42.1mN·m
Pull-out Torque	23.0mN·m/200pps	28.4mN·m/200pps
Pull-in Torque	22.5mN·m/200pps	27.9mN·m/200pps
Max. Pull-out Pulse Rate	580pps	610pps
Max. Pull-in Pulse Rate	495pps	520pps

CHARACTERISTICS



DIMENSIONS



Unit : mm, General tolerance : ±0.5